



GMT MONTHLY MEMBERSHIP PROGRESS REPORT

Results as of: 6/30/2017

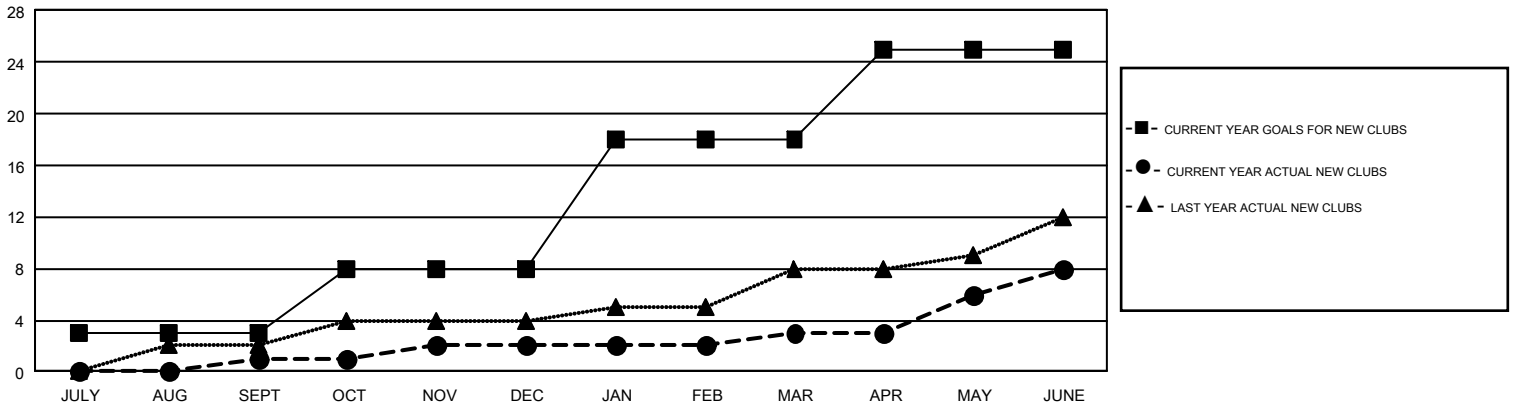
GMT Constitutional Area 7, Group A

GMT: WAYNE OAKES

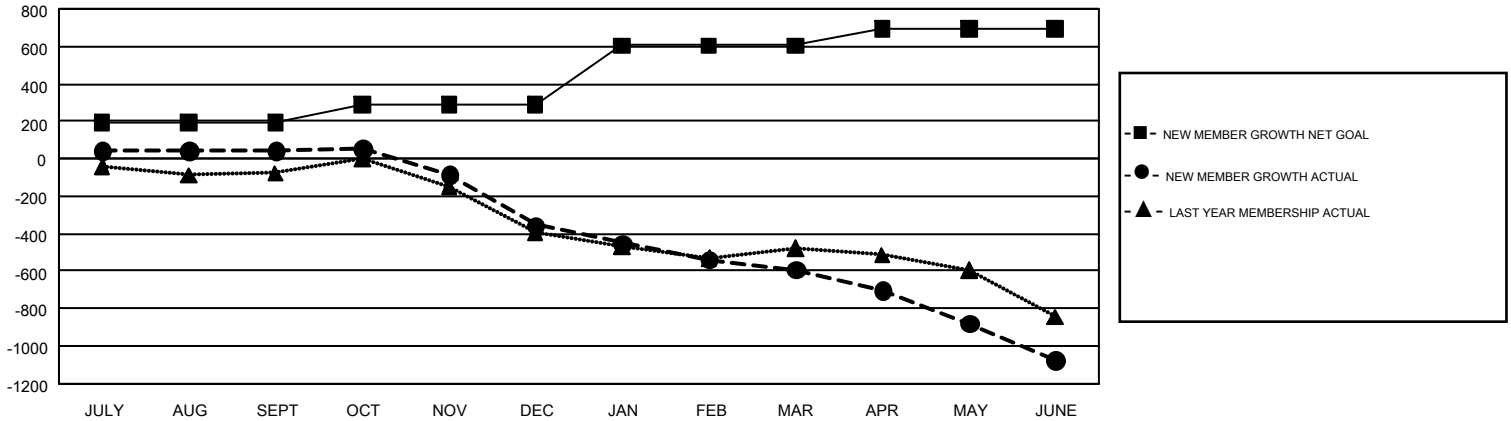
REPORT DOES NOT INCLUDE CLUBS IN UNDISTRICTED AREAS.

Clubs				Members			
RESULTS FOR 2016-2017				RESULTS FOR 2016-2017			
QUARTER	NEW CLUB GOAL	NEW CLUBS	DROPPED CLUBS	QUARTER	NEW MEMBER GROWTH NET GOAL (not reinstated or transfers)	NEW MEMBER GROWTH ACTUAL (not reinstated or transfers)	DROPPED MEMBERS ACTUAL (including transfers)
JULY/AUG/SEPT	3	1	1	JULY/AUG/SEPT	192	821	779
OCT/NOV/DEC	5	1	2	OCT/NOV/DEC	98	582	978
JAN/FEB/MAR	10	1	3	JAN/FEB/MAR	315	613	851
APR/MAY/JUNE	7	5	11	APR/MAY/JUNE	90	1,030	1,514

GOALS AND ACTUAL NEW CLUBS CUMULATIVE



GOALS AND ACTUAL MEMBERS CUMULATIVE



DROPPED CLUBS: 17	854 CLUBS OF 1,231 ADDED 1 OR MORE NEW MEMBERS	GENDER DISTRIBUTION
DROPPED MEMBERS	CLICK HERE FOR CUMULATIVE MEMBERSHIP DATA	MALE 17,374 (67.06%)
DECEASED 358		FEMALE 8,533 (32.94%)
CLUB CANCELLED 12		TOTAL FAMILY UNIT MEMBERS 4,399
OTHER 3,752		FAMILY MEMBERS PAYING HALF DUES 2,228
TOTAL 4,122		